



## OPERATION MANUAL

# SPARE PARTS SECTION

The following section covers the spare parts diagrams and lists that were current at the time this manual was originally printed. Due to continuous improvements of the machine, changes may be made at any time without notification.

### HOW TO ORDER SPARE PARTS

1. Have your machines **model number, serial number & date of manufacture** on hand, these can be found on the specification plate mounted on the machine
2. A scanned copy of your parts list/diagram with required spare part/s identified
3. Go to [www.machineryhouse.com.au/contactus](http://www.machineryhouse.com.au/contactus) and fill out the enquiry form attaching a copy of scanned parts list.

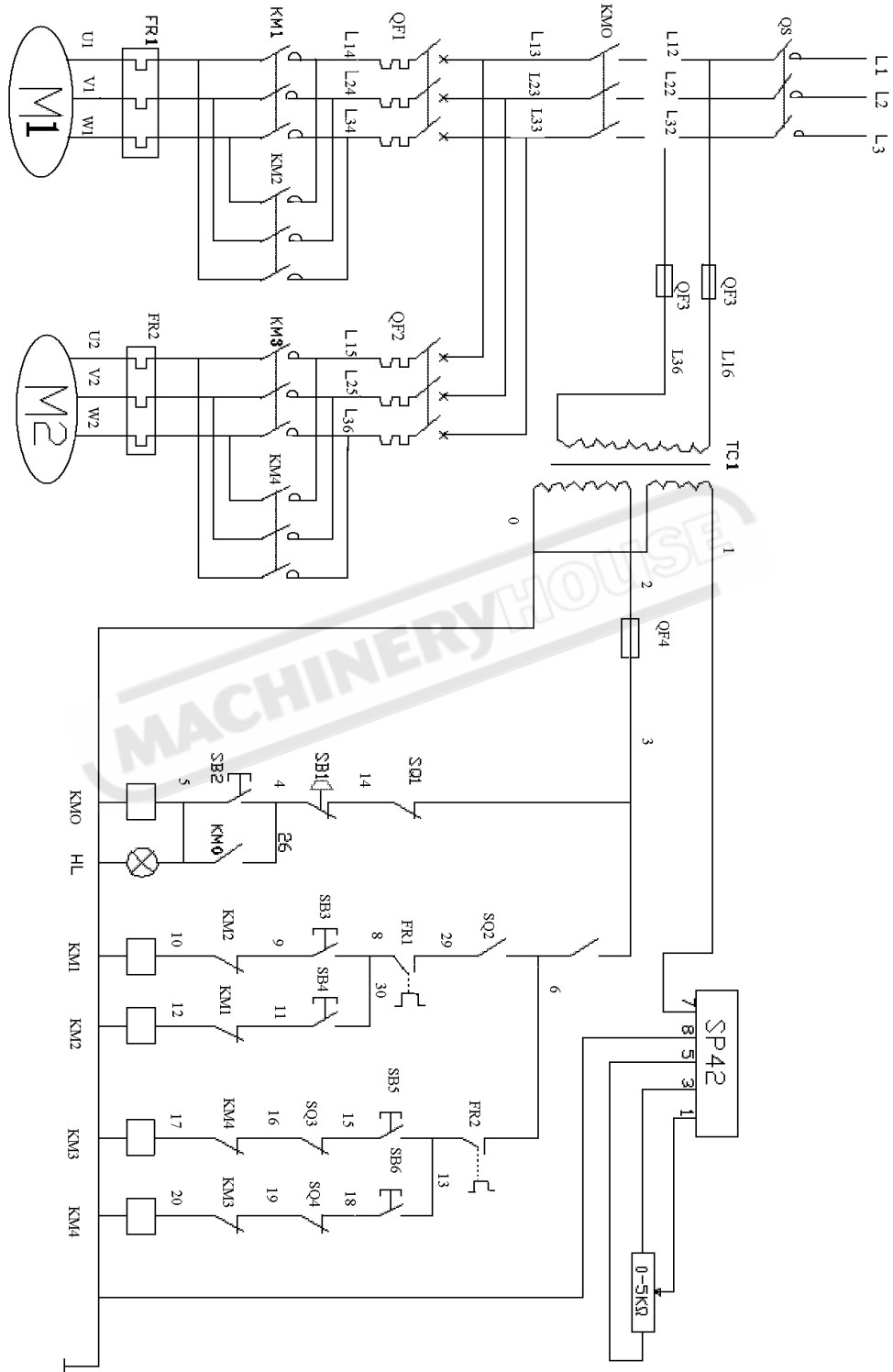
### CONTENTS

A. Electrical Circuit Diagram.....	20
B. Spare Parts Diagram.....	21
Spare Parts List.....	22
Risk Assesment.....	24



# OPERATION MANUAL

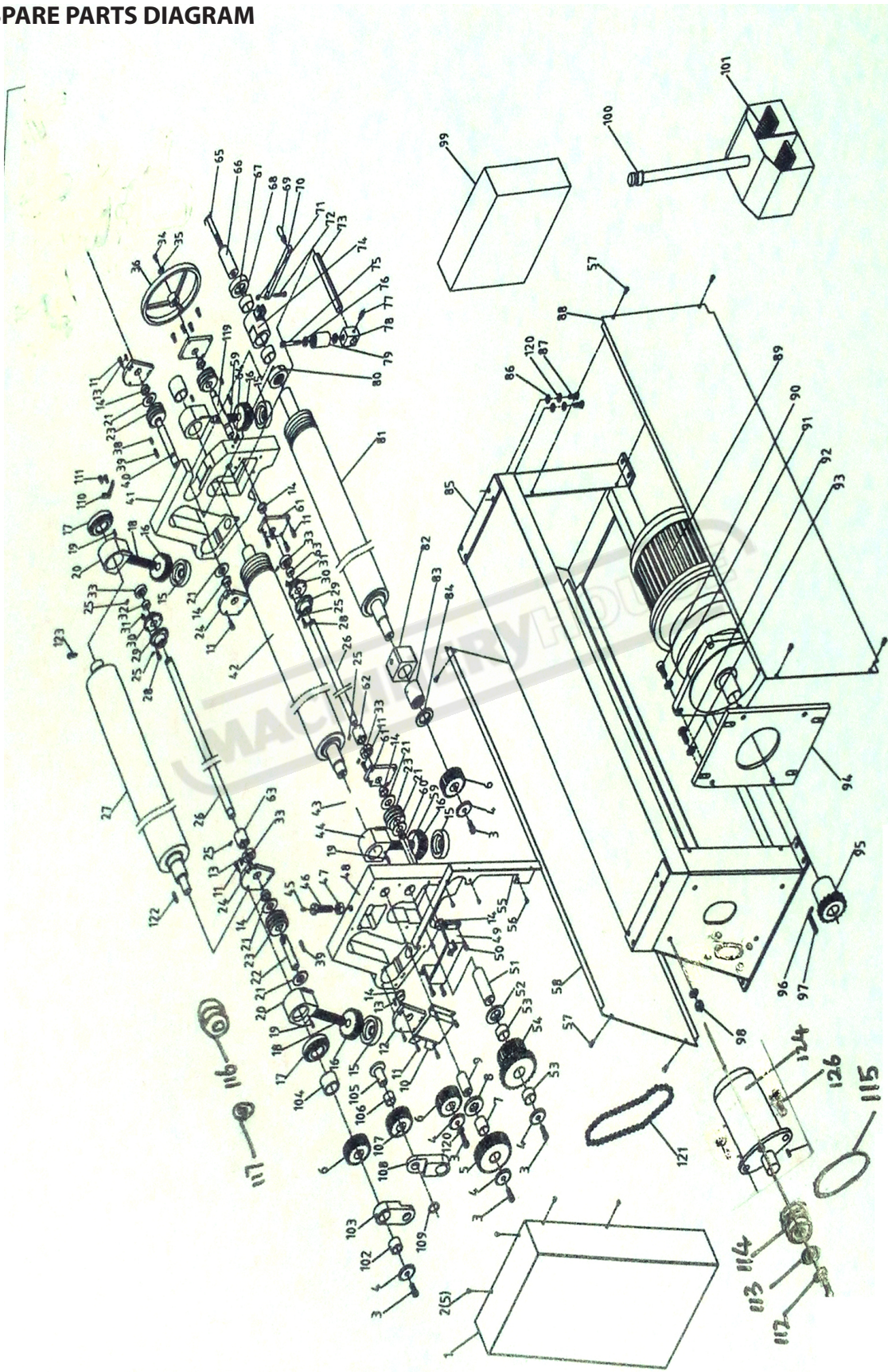
## A. ELECTRICAL CIRCUIT DIAGRAM





# OPERATION MANUAL

## B. SPARE PARTS DIAGRAM





## OPERATION MANUAL

### SPARE PARTS LIST

Part #	Description	Q'ty	Part #	Description	Q'ty
1	Protecting Cover	1	40	Worm Shaft	1
2	Hex Bolt M6X10	5	41	Right frame	1
3	Bolt M12X30	5	42	Lower roller	1
4	Mat	3	43	bushing	2
5	Big gear	1	44	Adjusting block	2
6	Small gear	3	45	Oli cup	1
7	Bushing	1	46	Bolt	1
8	Washer	1	47	Nut M20	1
9	Shaft	1	48	Left frame	1
10	Block plate	1	49	Supporting plate	1
11	Hex Bolt M6X25	40	50	Hex Bolt M8X25	4
12	fixed plate	1	51	Shaft	1
13	Spring pin	2	52	Washer	1
14	Bushing	8	53	Bushing	2
15	Supporting bushing	3	54	Chain wheel	1
16	Worm wheel	3	55	Connecting plate	1
17	Bearing	2	56	Bolt M6X12	9
18	Screw rod	2	57	Bolt M8X16	8
19	Locking bolt M6X16	4	58	Cover plate	1
20	Adjusting block	2	59	Small screw rod	2
21	Washer	8	60	Connecting shaft	1
22	Worm shaft	1	61	Block plate	2
23	Worm shaft	4	62	Connecting bushing	2
24	Block Plate	2	63	Bushing	1
25	Hex bolt M6x16	8	64	Locking bolt M10X30	1
26	Connecting shaft	2	65	Hex bolt M16X130	1
27	Back roll	1	66	Handle	1
28	Key 6x25	4	67	Connecting bushing	1
29	Connecting bushing	2	68	Bushing	2
30	Connecting bushing	2	69	Swivel handle	1
31	Locking Nut M6x16	8	70	Pole of Handle	1
32	Spring washer	2	71	Locking Nut M8	1
33	Connecting bushing	3	72	Hex bolt M8X45	1
34	Hex Bolt M8X20	9	73	Shaft	1
35	Sleeve	1	74	Locking bushing	1
36	Handle wheel	1	75	Hex bolt M12X50	1
37	Hex bolt M8x30	4	76	Bearing	2
38	Key 8x25	2	77	Hex bolt M10X16	1
39	Key 8x45	2	78	Sliding block	1



## OPERATION MANUAL

### PARTS LIST

Part #	Description	Q'ty	Part #	Description	Q'ty
79	Limited block	1	116	Big pulley	1
80	Sliding sleeve	1	117	washer	1
81	Upper roller	1	118	Locking bolt M6x8	2
82	Adjusting block	1	119	Worm shaft	1
83	Sleeve	1	120	Spring washer	8
84	Mat	1	121	Chain	1
85	stand	1	122	Key	3
86	Washer	8	123	Oil cup	1
87	Bolt M12X35	8	124	Elevating Motor	1
88	Block plate	1	125	Key 6x20	1
89	motor	1	126	Hex Bolt M10x50	4
90	Hex bolt M16X35	4	127	Washer 10	4
91	Spring washer 16	4	128	Nut M10	4
92	Bolt M16X40	4			
93	Washer 16	8			
94	Plate for motor	1			
95	Small chain wheel	1			
96	Locking Bolt M8X16	2			
97	Key	1			
98	Nut M16	4			
99	Electrical box	1			
100	Control box	1			
101	Foot pedal	1			
102	Bearing	1			
103	Connecting plate	1			
104	Spacer	1			
105	Small shaft	1			
106	Bushing	1			
107	Gear	1			
108	Connecting plate	1			
109	Spacer	1			
110	Switch Bracket	1			
111	Hex screw M5x12	2			
112	Hex screw M6x25	2			
113	washer	1			
114	Small pulley	2			
115	V-belt	2			